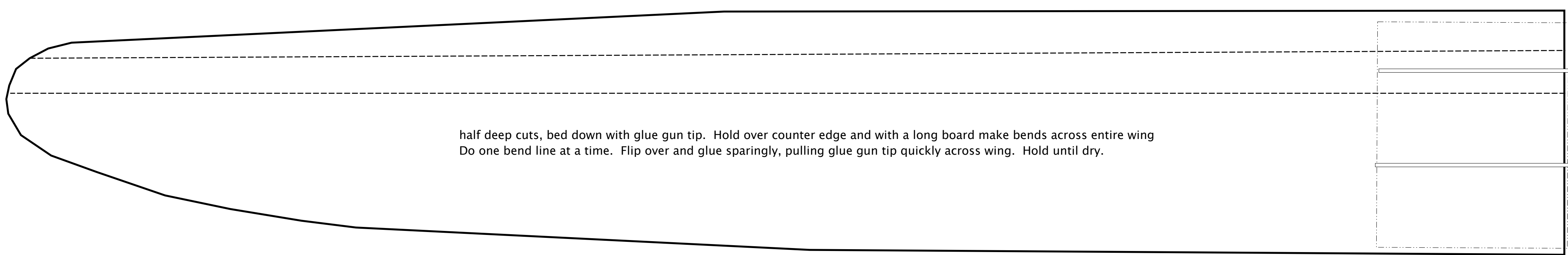
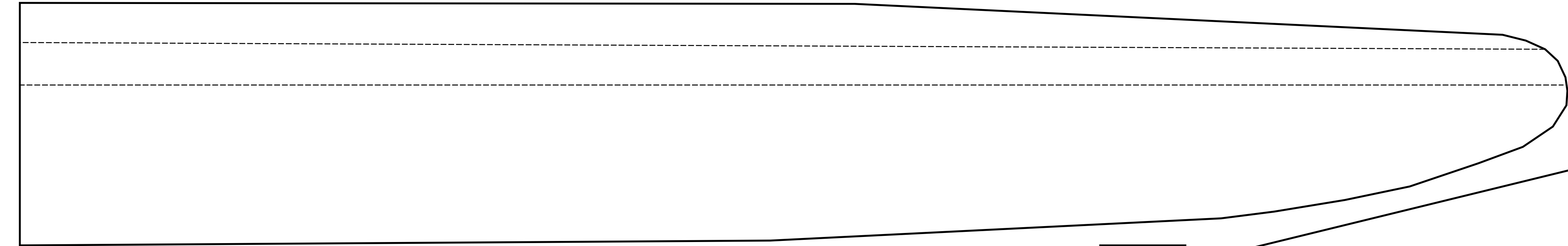
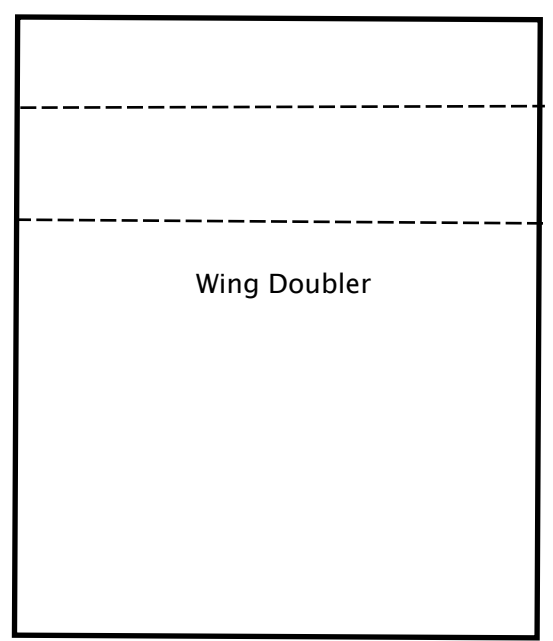
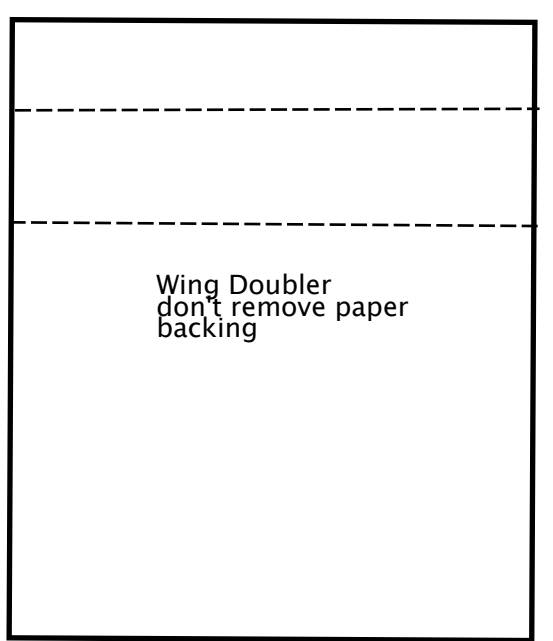


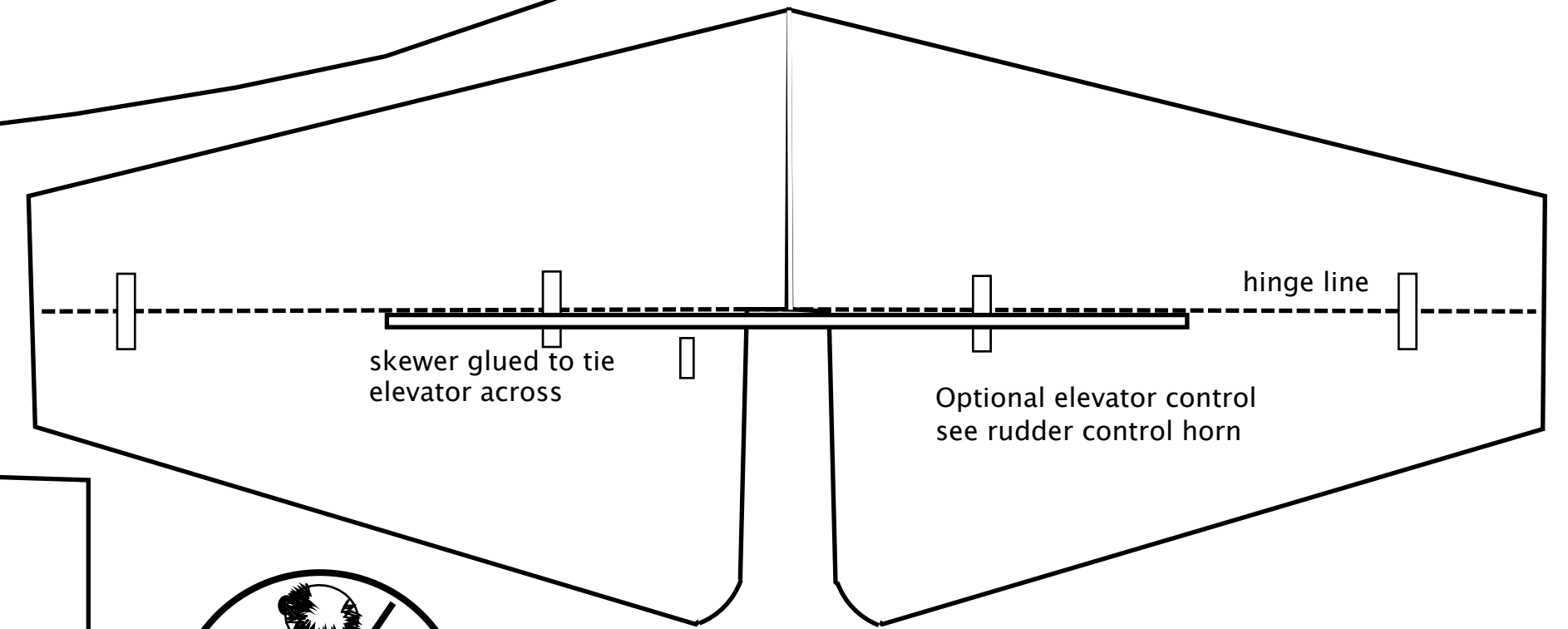
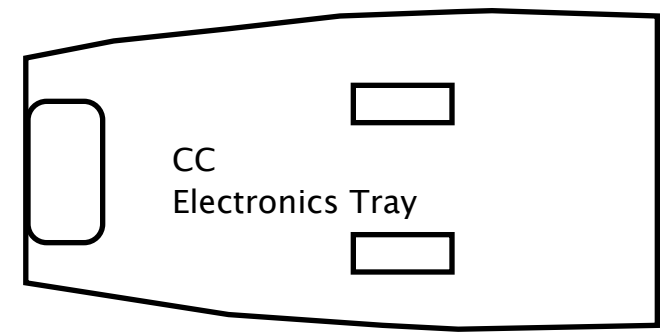
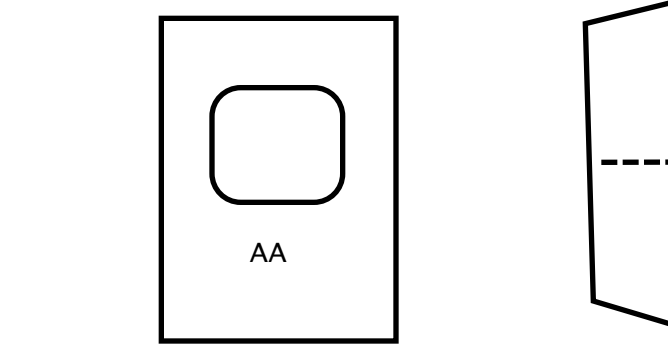
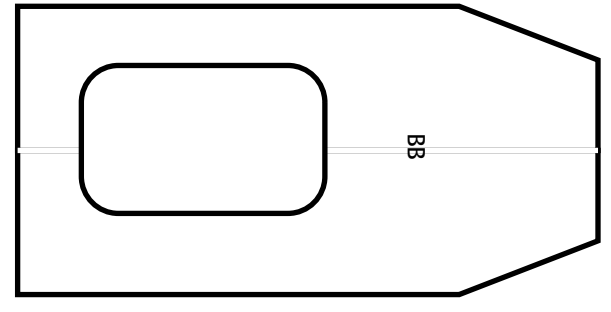
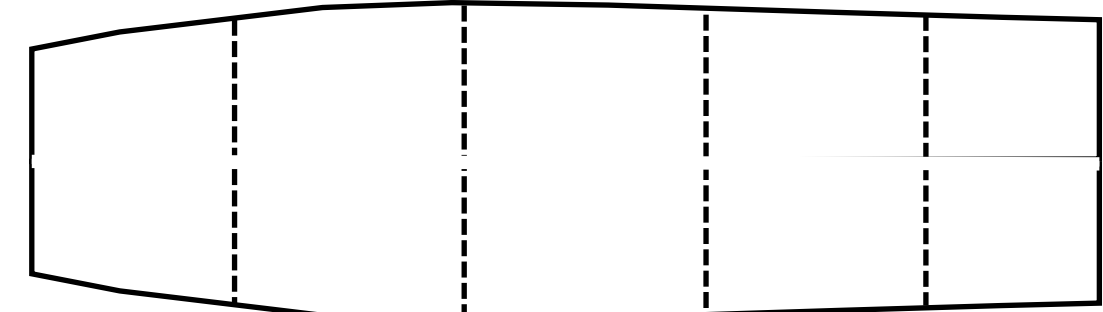
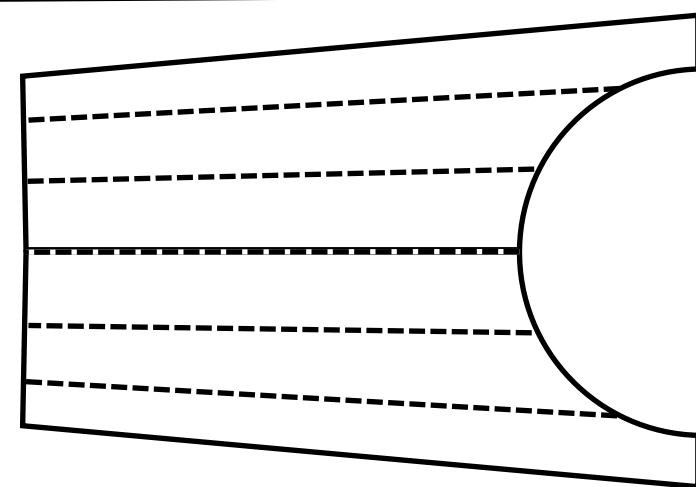
Airfoil Form to check shape



Two Part Wing  
Each wing has a doubler, one glued underneath as shown be a tight fit joining the wings



don't remove paper from underside with cuts - helps part hold shape

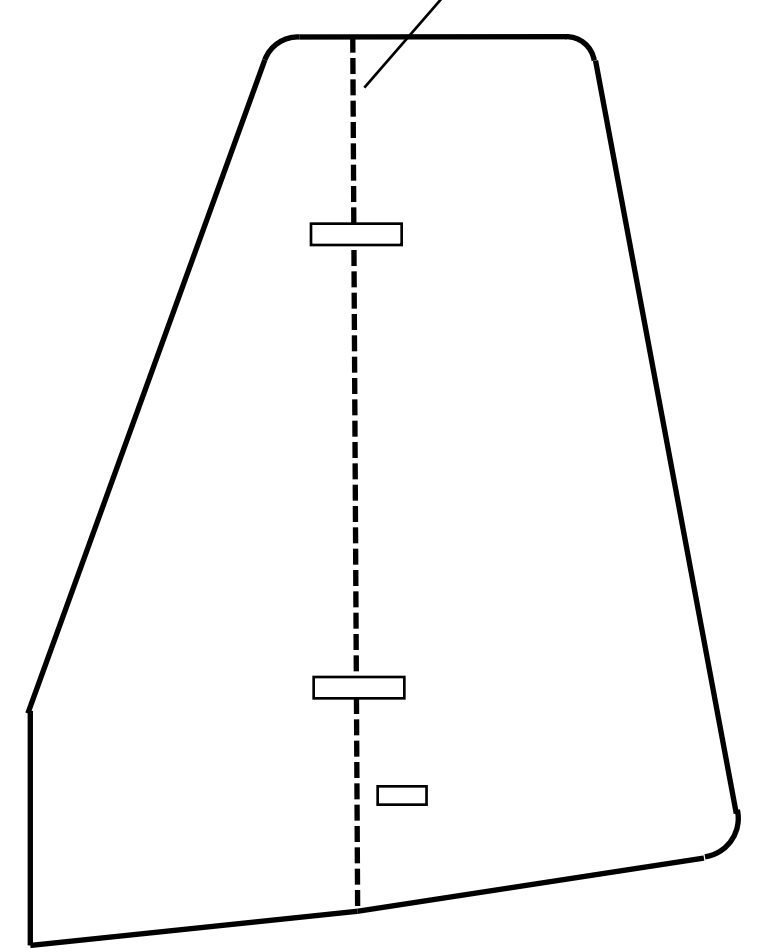


OLD GUY RC  
Rudder Only Control  
44.5" span. 1.05 sqft  
3.0-3.5 oz all up weight

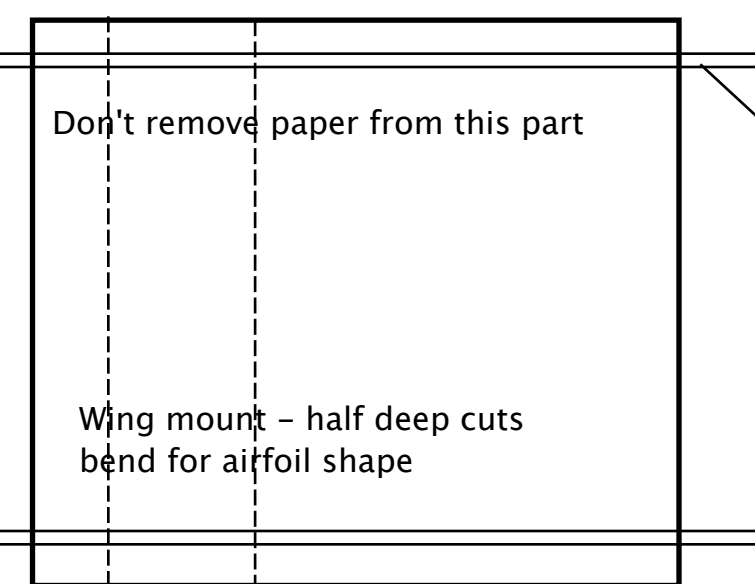
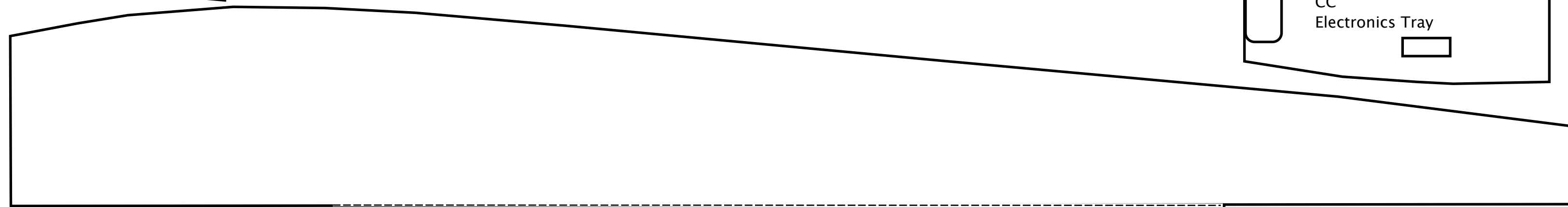
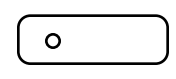
# Grünau Baby IIB

1" : 1' Scale

Cut along dotted line after sanding rudder smooth. Insert two small plastic strips cut from scrap plastic packaging



rudder control horn cut from small popsicle stick  
3/4" popsicle stick control horn



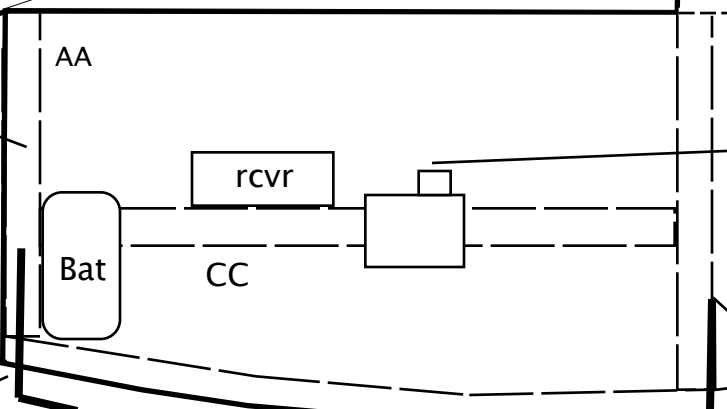
Skewers glued to underside of mount

Lightly sand LE and TE with 220 sandpaper - topside only

Pull rear pylon sides together here, then glue wing mount

Skewers glued to underside of wing mount both sides for diagonal rubber band hold down

Add coins as ballast until model balances



HK GT2 3 ch rcvr  
3.7v 1S lipo  
3 gram servo(s)  
Model needs 1 oz to balance

# D-7-2286

1/32" wire pushed in with good amount of glue for tow hook

1/32" wire for bungee or hi start hook