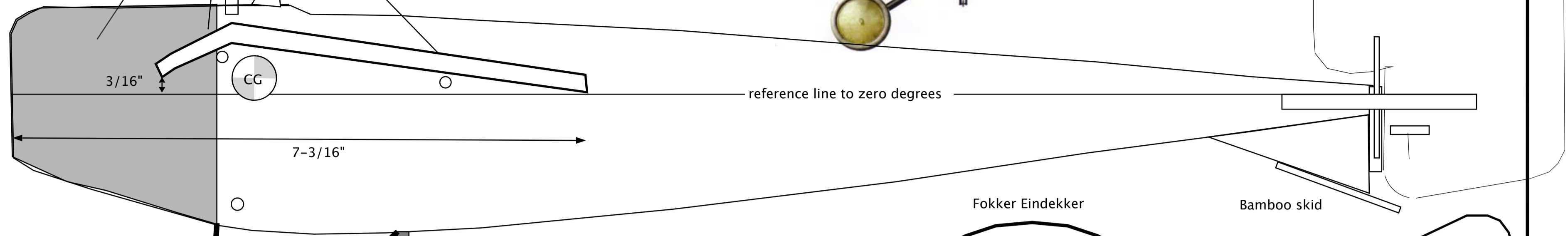


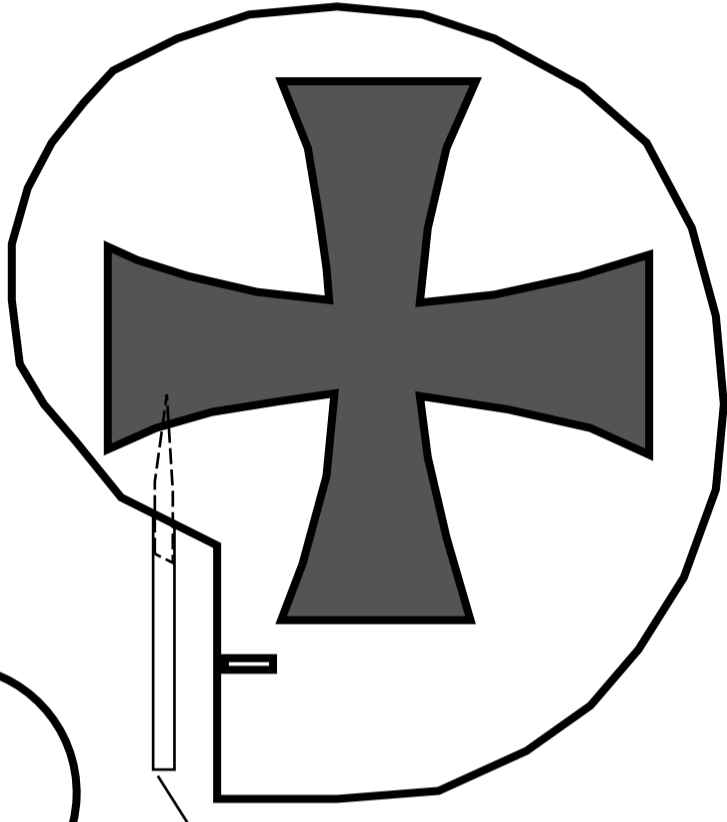


To set wing position:
 First draw a pencil line level with top of stabilizer
 across fuselage. Make a mark 7-3/16" back from front
 The top back edge of the wing will be 3/16" below the
 reference line. The top of the wing at the front will be 1/2" above
 the reference line. Make marks and then glue wing on.

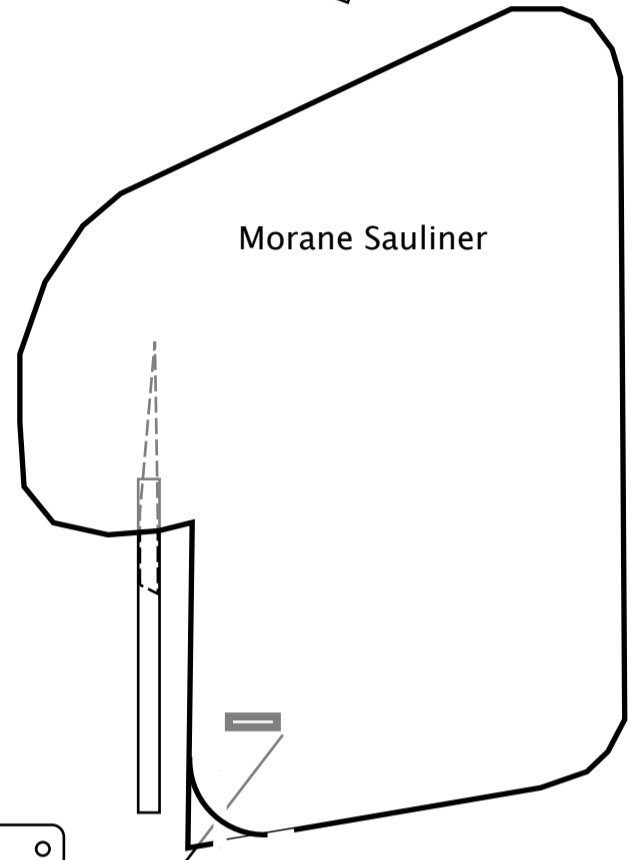


OLD GUY RC
 Morane - Saulnier Type G
 Rudder Only Control
 32" span. 1.10sqft
 5 oz all up weight

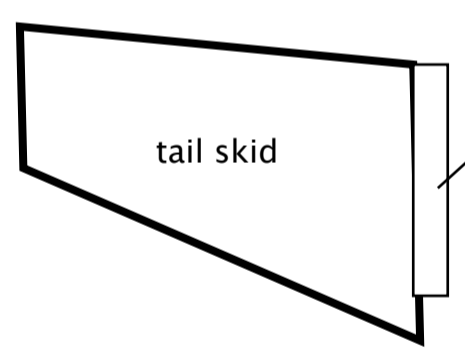
Morane-Saulnier Type G



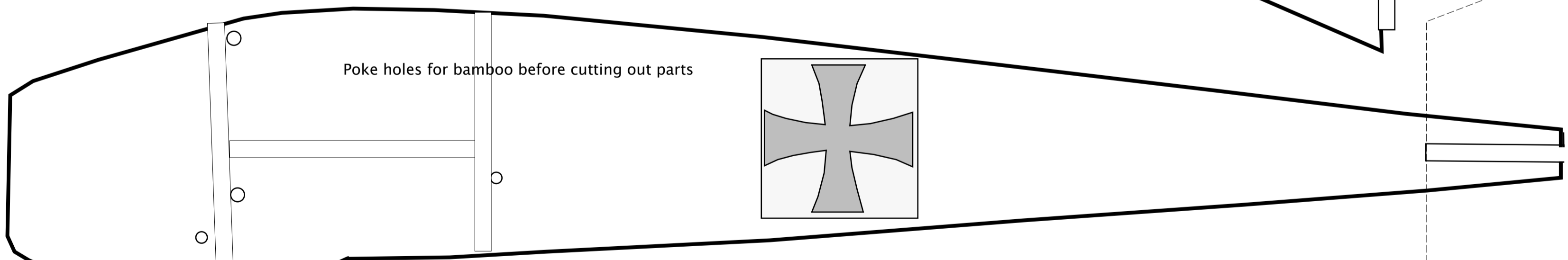
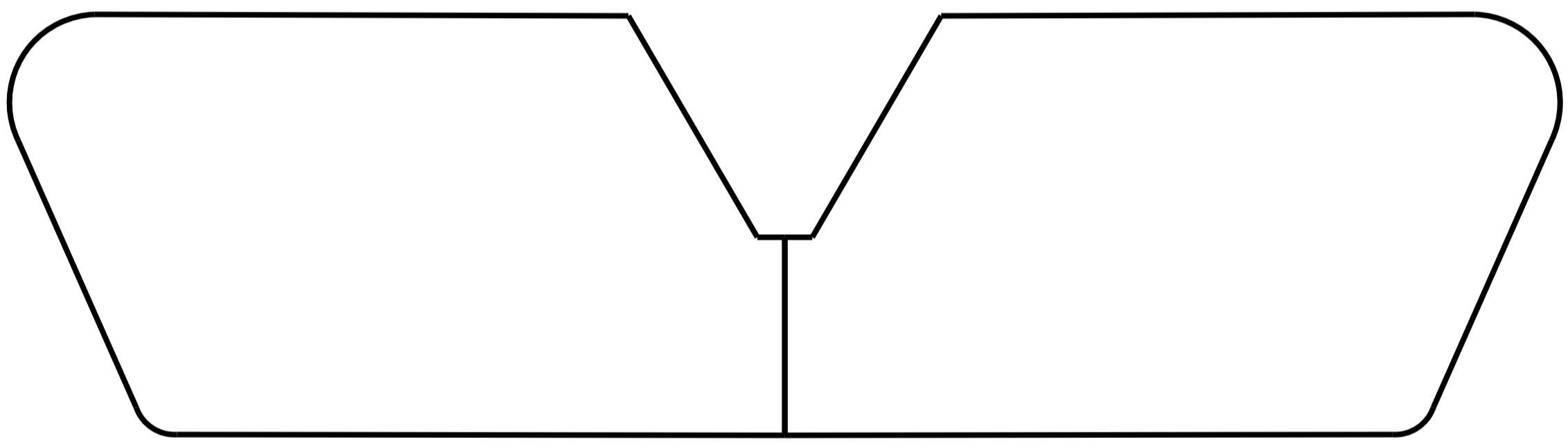
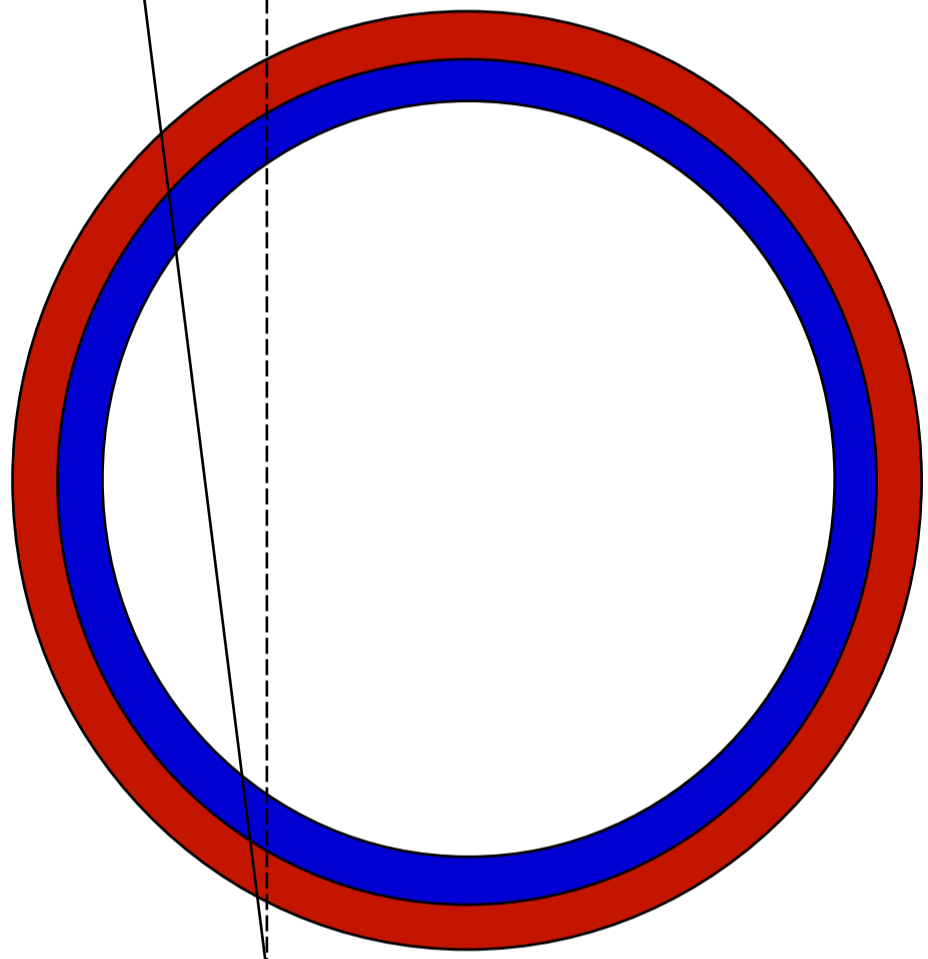
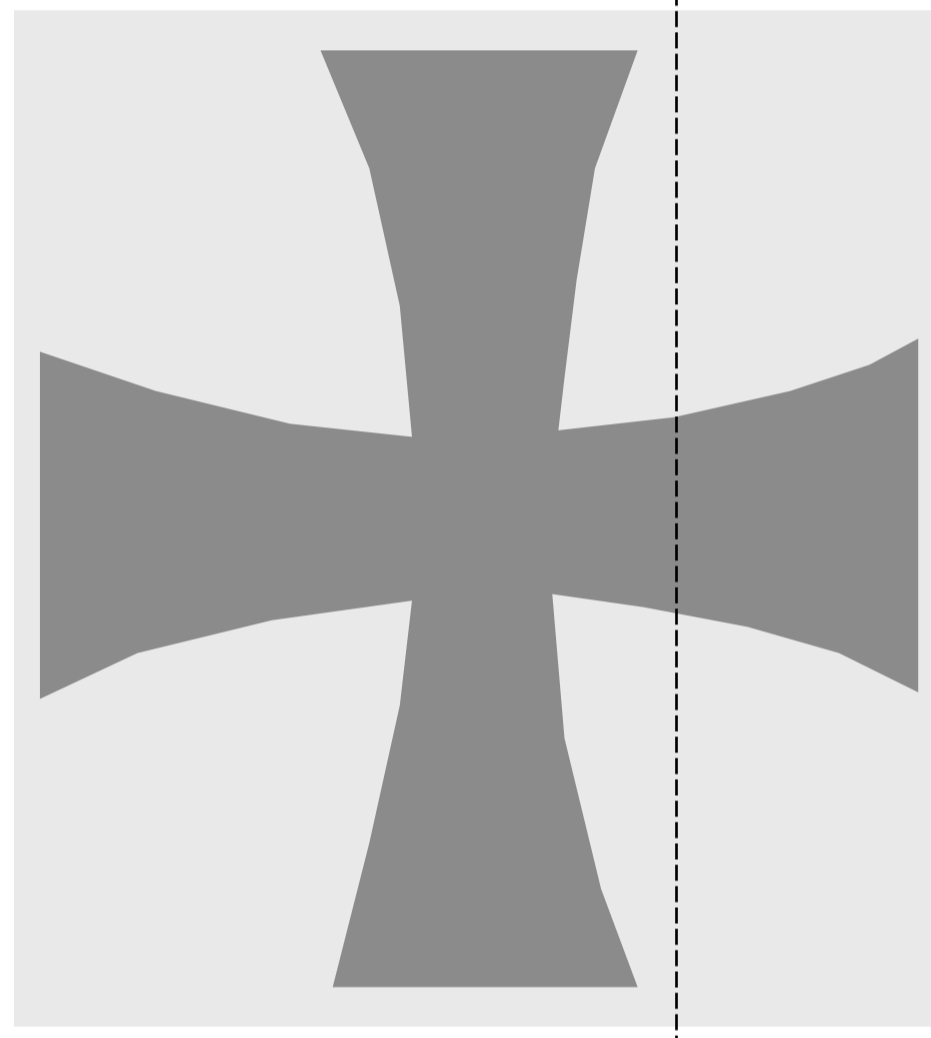
Bamboo hinge pivot
 Push in with some glue



Hobby stick, drill very fine holes with
 Xacto tip for control wires. Push thru
 slot cut in rudder and glue

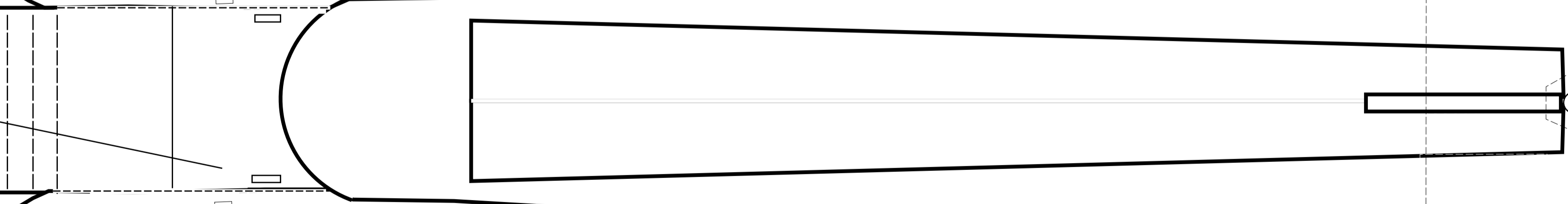
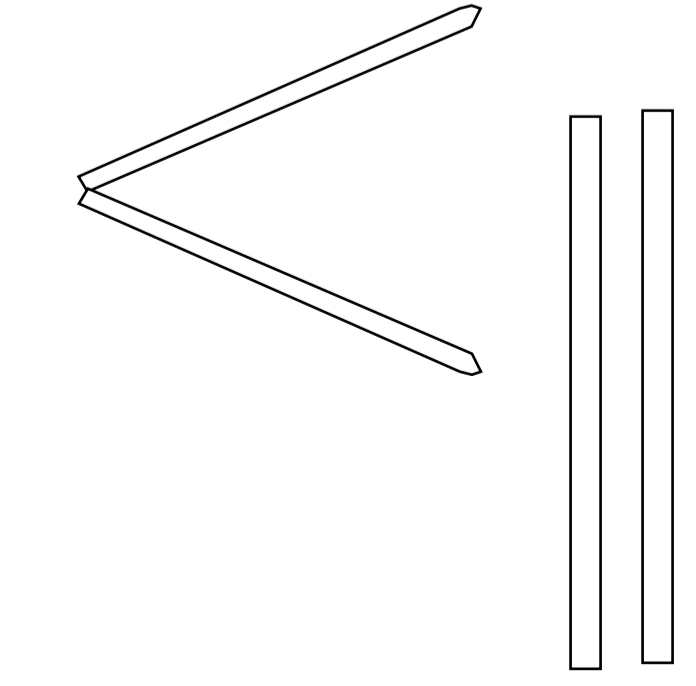


Glue paper tube
 for rudder hinge



Dihedral 2" at tips

cut 1/4" wide hobby stick in half and glue thru slots in fuselage



Adjust position of servo for baalance

